

**Bloomsbury Office**

26 Museum Street  
London  
WC1A 1JU

T 020 7291 0650

F 020 7291 0651

E [bloomsbury@edmundcude.com](mailto:bloomsbury@edmundcude.com)

**JOHNS MEWS, BLOOMSBURY, WC1N**  
£650 per week**Preliminary Details**

This brand new property, which is being let out for the first time, has just been refurbished to a very high standard. It is located on a quite mews street and on the 3rd floor of a converted office building. It has two double bedrooms, two bathrooms, dining room and large open plan kitchen and living room. It also benefits from a balcony off the living room, washing machine, dishwasher, a lift and underground secure parking. Ideal for professionals and is offered furnished or unfurnished.

**2 Bedrooms • 2 Bathrooms**




26 Museum Street, London, WC1A 1JU  
T 020 7291 0650 F 020 7291 0651 E [bloomsbury@edmundcude.com](mailto:bloomsbury@edmundcude.com)  
[www.edmundcude.com](http://www.edmundcude.com)



## Area Overview

Blessed with gardens and squares and encompassing the capital's bastions of law, education and medicine, Bloomsbury has undisputed appeal. With shopping on Oxford St, entertainment in Leicester Square and restaurants in Covent Garden, Bloomsbury boasts a location that is hard to rival. Popular with city professionals, academics and international visitors, much of the accommodation tends to be beautifully presented studios, 1 and 2 bedroom flats.



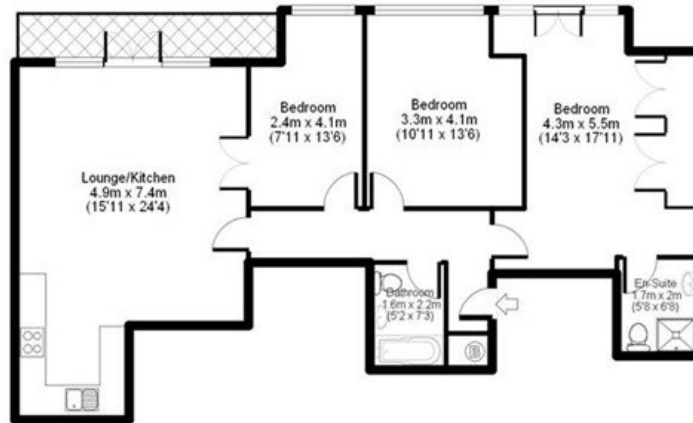
Johns Mews, Bloomsbury  Chancery Lane (0.3M),  Russell Square (0.4M),  Holborn (0.4M)

## Council Tax Bands



Council	Band A	Band B	Band C	Band D	Band E	Band F	Band G	Band H
Camden	£ 888	£ 1,035	£ 1,183	£ 1,331	£ 1,627	£ 1,923	£ 2,219	£ 2,663
Average	£ 761	£ 888	£ 1,015	£ 1,142	£ 1,396	£ 1,650	£ 1,904	£ 2,285

## Johns Mews WC1

APPROX GROSS INTERNAL FLOOR AREA: 949 sq. ft / 88 sq. m



Floorplan for identity purposes only.  
Measurements are approximate and not to scale.

Energy Efficiency Rating			Environmental Impact (CO <sub>2</sub> ) Rating		
	Current	Potential		Current	Potential
<i>Very energy efficient - lower running costs</i>			<i>Very environmentally friendly - lower CO<sub>2</sub> emissions</i>		
(92-100) <b>A</b>			(92-100) <b>A</b>		
(81-91) <b>B</b>			(81-91) <b>B</b>		
(69-80) <b>C</b>	<b>78</b>	<b>83</b>	(69-80) <b>C</b>	<b>76</b>	<b>81</b>
(55-68) <b>D</b>			(55-68) <b>D</b>		
(39-54) <b>E</b>			(39-54) <b>E</b>		
(21-38) <b>F</b>			(21-38) <b>F</b>		
(1-20) <b>G</b>			(1-20) <b>G</b>		
<i>Not energy efficient - higher running costs</i>			<i>Not environmentally friendly - higher CO<sub>2</sub> emissions</i>		
<b>England &amp; Wales</b>	EU Directive 2002/91/EC		<b>England &amp; Wales</b>	EU Directive 2002/91/EC	

The energy efficiency rating is a measure of the overall efficiency of a home. The higher the rating the more energy efficient the home is and the lower the fuel bills will be.

The environmental impact rating is a measure of a home's impact on the environment in terms of carbon dioxide (CO<sub>2</sub>) emissions. The higher the rating the less impact it has on the environment.

## PLACES OF INTEREST NEAR JOHNS MEWS, BLOOMSBURY, WC1N



### **Russell Square Station**

Russell Square is a London Underground station, located on Bernard Street in Bloomsbury. Opened in 1906 and designed by Leslie Green, the station is small, but very busy, being located on the Piccadilly Line.

🚶 600m (10 mins) from Johns Mews



### **Brunswick Centre**

This Grade II listed shopping centre is located in the heart of Bloomsbury and, following a £26 million rejuvenation, it is one of the most fashionable in London. Originally designed in the mid-1960's by Patrick Hodgkinson, the centre now contains 560 flats, shops, restaurants and the Renoir Cinema.

🚶 700m (12 mins) from Johns Mews



### **British Museum**

A museum of human history and culture based in Bloomsbury, London. The collection, which is largely based on those of the physicist and scientist Sir Hans Sloane was established in 1753. As one of the most comprehensive collections of its kind in the world, it continues to draw crowds from all corners of the globe and is one of London's most popular tourist attractions.

🚶 800m (13 mins) from Johns Mews



### **Senate House**

Senate House is the administrative centre of the University of London which is located in Bloomsbury, London. The building, which was built between 1932 and 1937, famously inspired George Orwell's description of the Ministry of Truth in his novel Nineteen Eighty Four.

🚶 800m (13 mins) from Johns Mews



### **Museum St**

Dating back to before the 1300's, Museum Street is at the heart of the borough of Bloomsbury. To its north lies the British Museum, hence its name, and also the Museum Tavern, which dates back to 1723. The street is populated with bookshops, such as the Atlantis bookshop, cafes and also Banbury Ball, our Bloomsbury branch.

🚶 800m (13 mins) from Johns Mews



### **Bedford Square**

Bedford Square in Bloomsbury, named after the Dukes of Bedford, is considered to be one of the best preserved pieces of Georgian architecture in London with a number of eminent residents, such as Lord Eldon, the celebrated Lord Chancellor.

🚶 1000m (17 mins) from Johns Mews